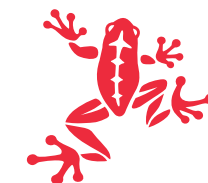
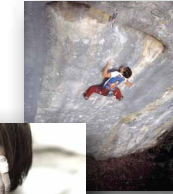


CLIMBING 2015
ROCK SHOES





passion to share

Between Josune Bereziartu becoming the first woman in history to break the 9a barrier and Alex Megos making the first world onsight of a 9a route, both wearing Tenaya shoes (models Aqua and Inti respectively) fourteen years have passed.

Throughout the whole of this period Tenaya's development and design team, with more than thirty years of experience, and always motivated by the common passion we share for our sport, have worked ceaselessly towards one goal: creating the finest climbing shoes that money can buy.





OASI

Maximum Range of Features



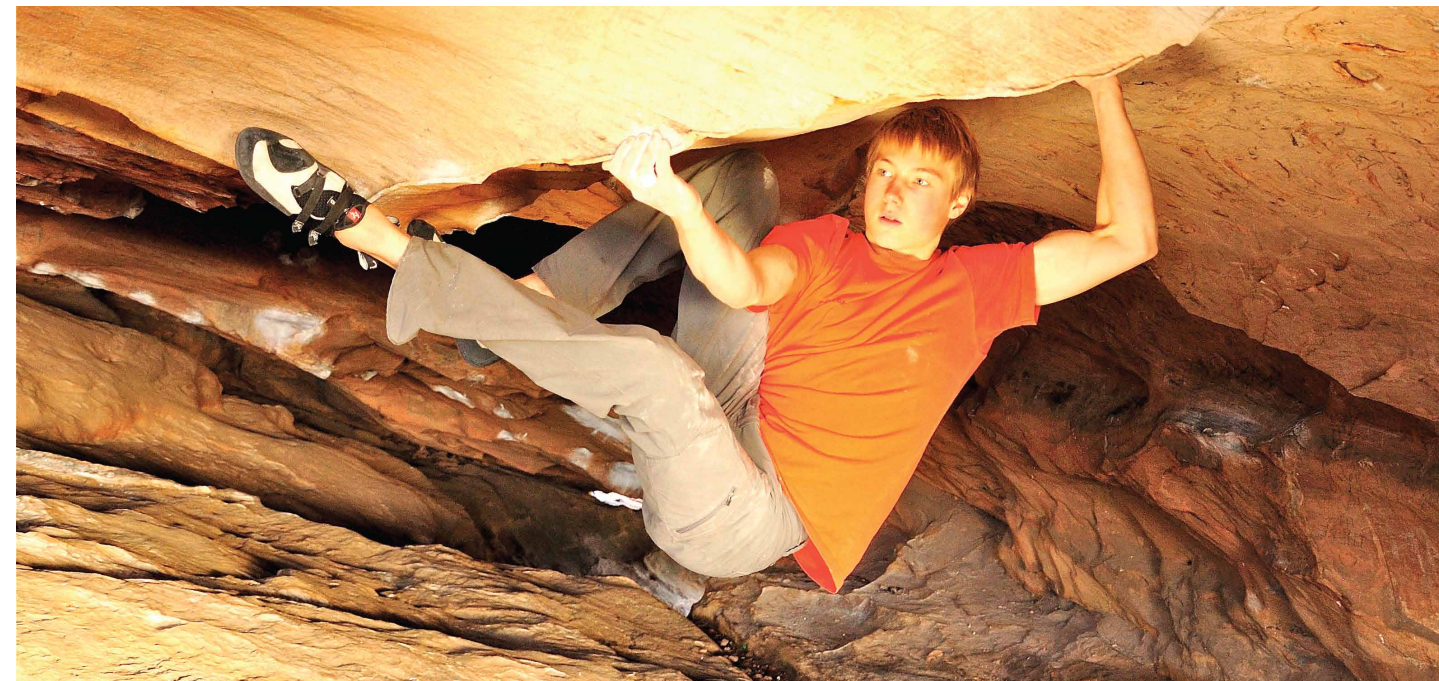
Designed to achieve the highest levels of performance, the Oasi is exceptionally comfortable yet offers incredible precision and responsiveness, making rock climbing feel easier and more intuitive. The shoe offers exceptional performance across a wide range of climbing disciplines, from bouldering on tiny edges and friction-slopers to long endurance pitches on overhanging walls.

Has been created using the RB Range X system (Maximum Range in Response and Balance), a new technology developed by Tenaya, which favours a dynamic response and perfect balance, leading to superior performance in all kinds of testing situations.

In the Oasi, state of the art technology combined with meticulous attention to detail proves that high performance and high comfort are possible in the same shoe, resulting in total connection between the climber and the rock.



SXR DYNAMICS IN - MOTION FIT	RB RANGE X	DRAXTOR®
--	----------------------	-----------------



TECHNICAL FEATURES

MATERIAL	LINING	FASTENER	INSOLE	MIDSOLE	SOLE	COLOR	SIZES
MICROFIBER	TXT COTTON	DRAXTOR PAT. SYSTEM	LYCRA WITH 2 LAYERS	2 CORK GI 1.8 AND TST 150	VIBRAM XS GRIP 3,5MM	WHITE AND BLUE	1 - 13UK MIDSIZES INCLUDED



TARIFA

Designed to respond the infinite forms and demands of the rock

The Tarifa will amaze you! Never before has a rock shoe offered such versatile performance in extreme situations. Its ability to stick on 'impossible' holds borders on the supernatural.

Utilizing the RB Range X system, a technology developed by Tenaya to make climbing feel both easier and more intuitive, the Tarifa offers superlative responsiveness in all kinds of demanding situations.

Not too rigid, not too soft, the Tarifa has been designed to provide optimal performance across a wide range of extreme climbing situations: from one-move boulder problems to long, sustained stamina-fests: from the steepest, most powerful overhangs to the thinnest of face climbs: from the tiniest edge to the vaguest smear.

You'll be amazed how such a radically down-curved shoe can feel so comfortable, more so than many conventionally shaped rock shoes. The answer lies in how the Tarifa works in perfect harmony with the natural biomechanics of your feet, meaning the only thing you have to think about is the next move.

SXR DYNAMICS
IN - MOT I O N F I T

RB

RANGE X



TECHNICAL FEATURES

MATERIAL	LINING	FASTENER	INSOLE	MIDSOLE	SOLE	COLOR	SIZES
MICROFIBER	TXT COTTON	LACE-UP	LYCRA WITH 2 LAYERS	2 CORK GI 1.8 AND TST 150	VIBRAM XS GRIP 3,5MM	WHITE AND YELLOW	1 - 13UK MIDSIZES INCLUDED



TATANKA

Speed in difficult situations

Tatanka, the most asymmetrical of our laced models, is a high-performance climbing shoe designed to take maximum advantage of the biomechanical properties of your feet in order to make climbing easier. When attempting the hardest moves on rock, time is often a critical factor, and this shoe allows you to make the fastest responses in all kinds of difficult situations.

The shoe fits closely, just like a glove, and include SXR Dynamics — a moving tightening system — together with a group of modifications in the sole and structure that have allowed us not only to increase the precision and comfort, but also means the foot is able to employ its maximum strength. Tatanka also has a quick and effective lacing system, a perfect combination of materials, and a powerful heel, giving great results on difficult rock climbs.

SXR DYNAMICS
IN - MOTION FIT



TECHNICAL FEATURES

MATERIAL	LINING	FASTENER	INSOLE	MIDSOLE	SOLE	COLOR	SIZES
MICROFIBER	TXT COTTON	LACE-UP	3D MULTILAYER STRETCHTEX	2D PLT 10	VIBRAM XS GRIP 4MM	WHITE AND ORANGE	2 - 13UK MIDSIZES INCLUDED



INTI

More Sensitivity

Developed from the RA, with which we have climbed some of the most difficult routes in the world, the INTI is a high performance rock shoe featuring outstanding responsiveness to the natural shape of the foot - an essential requirement on the most demanding climbs.

With its asymmetric fit and perfectly angled form the INTI enables the climber to exert maximum force on the point of contact. But the most important part of the shoe is its 'soul', which features the brand new state of the art SXRDynamics - a revolutionary tightening system giving incomparable levels of comfort and precision.

Just like its predecessor, the INTI is a superbly balanced shoe, equally at home on both small edges and sloping friction holds.

SXR DYNAMICS
IN - MOTION FIT



TECHNICAL FEATURES

MATERIAL	LINING	FASTENER	INSOLE	MIDSOLE	SOLE	COLOR	SIZES
MICROFIBER	TXT COTTON	VELCRO	3D MULTILAYER STRETCHTEX	2D PLT 10	VIBRAM XS GRIP 4MM	WHITE AND BLACK	2 - 13UK MIDSIZES INCLUDED



RA

Maximum performance and ease of use

Ra is a climbing shoe offering high technical performance coupled with surprising ease of use, comfort and above all an extraordinary response under the most demanding conditions.

Manufactured around a shoe horn with the same asymmetric grading as the Aqua+, it is designed to adapt to your foot on extremely difficult ascents.

Its combination of materials and the perfect balance offered by all its features guarantee surprising results on difficult stone faces and microscopic grooves as well as in the hard work of friction and adherence.

SXR DYNAMICS
IN - MOTION FIT



TECHNICAL FEATURES

MATERIAL	LINING	FASTENER	INSOLE	MIDSOLE	SOLE	COLOR	SIZES
MICROFIBER	TXT COTTON	VELCRO	3D MULTILAYER STRETCHTEX	2D PLT 10	VIBRAM XS GRIP 4MM	WHITE AND ORANGE	2 - 13UK MIDSIZES INCLUDED





MASAI
Balance

Favoured by top level climbers, the Masai is one of the Tenaya's most preferred shoe. It stands out due to its balanced features.

More experienced climbers know that on the more challenging routes movements change constantly between sharp, microscopic interlinear spaces and rounded, sloping rock faces. For that reason you need a shoe which is able to take all the pressure on the tip while at the same time responding with precision and sensitivity to requirements of friction and grip.

The sum of all these features is balance and that is the Masai's most outstanding feature.

SXR DYNAMICS
IN - MOTION FIT



TECHNICAL FEATURES

MATERIAL	LINING	FASTENER	INSOLE	MIDSOLE	SOLE	COLOR	SIZES
MICROFIBER	TXT COTTON	LACE-UP	3D MULTILAYER STRETCHTEX	2D PLT 10	VIBRAM XS GRIP 4 MM	YELLOW	2 - 13UK MIDSIZES INCLUDED





AQUA + Maximum performance and ease of use

Starting from the excellent results obtained by the Aqua shoe, Tenaya's R&D department has developed Aqua+. The results is a shoe designed to support your foot and adapt to the most exacting situations.

Manufactured using a more asymmetric shoe horn which make the shoe respond more aggressively in extreme climbing situations while achieving the same balance as the previous model.

SXR DYNAMICS
IN - MOTION FIT



TECHNICAL FEATURES

MATERIAL	LINING	FASTENER	INSOLE	MIDSOLE	SOLE	COLOR	SIZES
MICROFIBER	TXT COTTON	VELCRO	3D MULTILAYER STRETCHTEX	2D PLT 10	VIBRAM XS GRIP 4MM	BLUE	2 - 13UK MIDSIZES INCLUDED





AMIGO

Comfort and Technical Features

Right from the production of the first Amigo, developed in close collaboration with Ron Kauk, the philosophy of making a comfortable shoe for extreme climbing, the evolution of this model has remained faithful to this challenge.

The new Amigo generation, manufactured around a more asymmetric shoe horn, is one of the most aggressive on the market. It stands out because of its comfort and excellent results with small footholds on difficult routes.



SXR DYNAMICS
IN - MOTION FIT

TECHNICAL FEATURES

MATERIAL	LINING	FASTENER	INSOLE	MIDSOLE	SOLE	COLOR	SIZES
MICROFIBER	TXT COTTON	LACE-UP	3D MULTILAYER STRETCHTEX	2D PLT 10	VIBRAM XS GRIP 4MM	BLUE	2 - 13UK MIDSIZES INCLUDED





AMIGO

Maximum development of strength

Developed before the Masai model, this shoe shares many of its qualities. Sapiens has been used by **Josune Bereziartu** on **Bain de Sang**, the first **9a** climbed by a woman in the history of climbing, and by **Ramon Julian** in his first climb of **La Rambla 9a+**.

Sapiens is a shoe with top level technical features which stands out because of the outstanding grip and balance it provides in the most demanding of situations.



TECHNICAL FEATURES

MATERIAL	LINING	FASTENER	INSOLE	MIDSOLE	SOLE	COLOR	SIZES
MICROFIBER	TXT COTTON	LACE-UP	3D MULTILAYER STRETCHTEX	2D PLT 10	VIBRAM XS GRIP 4MM	GREY	3 - 13UK MIDSIZES INCLUDED





OCEANO

Precision and Sensitivity



Using the concept of a ballet shoe combined with the strength of a lace-up this shoe allows you to climb while enjoying the precision and sensitivity of a ballet shoe. Its shape gives the big toe maximum space allowing exceptional control over all types of difficult ravines. Easy to put on and easily adjustable.

TECHNICAL FEATURES

MATERIAL	LINING	FASTENER	INSOLE	MIDSOLE	SOLE	COLOR	SIZES
MICROFIBER	TXT COTTON	SLIPPER	3D MULTILAYER STRETCHTEX	2D PLT 10	VIBRAM XS GRIP 4MM	GREEN	3 - 13UK MIDSIZES INCLUDED

